

“

Nestled in the skies

”


# AZURE

PLOT NO. 11, SECTOR 8,  
TALOJA, NAVI MUMBAI



Exquisite 2BHK  
Luxury Apartments at Talaja





*Wake up to chirping melodies  
gaze through fond memories,  
feel the breeze that puts  
a tiring day at ease,  
soak yourself in the light  
that dazzles at this height!*

“

---

Far from the hustle.  
Farther from the bustle.

---

”

A grandiose 21 storied skyrise in the ever transforming suburb of Talaja that is fast opening its doors to residential projects. Get away from the buzz that you've known and move into the serenity at AZURE where comfort is 'Nestled in the skies'.

AZURE

---

PLOT NO. 11, SECTOR 8,  
TALOJA, NAVI MUMBAI



“

## Cementing Future

”

**BANKA**  
I N F R A C O N  
INSPIRED ENGINEERING

Established in 1983, Banka Group has bridged distances through the length and breadth of the country. Innovation and dedication is their legacy and future. Under the stewardship of Founder Chairman Mr. Mahendra H. Banka, Banka Group has grown from strength to strength completing above 150 structures across the nation.

Few of their notable projects include,

- Mahanadi River Bridge at Surajgarh, Chhattisgarh (1800 Meters long)
- Mahanadi River Bridge at Rajim, Chhattisgarh (600 Meters long)
- Cumbarjua Creek Bridge, Goa
- Varsoli Creek Bridge, Alibag
- Taloja Creek Bridge, Navi Mumbai

After leaving a formidable mark through the bridges, the Banka Group now moves onto residential projects in the real estate market with GHP at Taloja.





Construction | Education | Hospitality

GHP group has a formidable presence in not one but three key sectors - Real Estate, Hospitality and Education.

Started in 1975 by Shri Gopal Chandrabhan Sharma, the group has left an indelible mark in every single sector that it operates in today. He was the one who donated huge portions of his land to build IIT Powai and also built the first modern structure of Powai. From there on, the group has come a long way and today boasts of more than 4 million sqft area of constructing residential and commercial structures, in Mumbai and Jaipur.

The group passionately runs 5 schools and college, imparting education ranging from play school to graduation courses. In the field of hospitality too, the group has enviable brand names of hotels and resorts, in both Mumbai and Jaipur. With considerable exposure to the Navi Mumbai real estate scene the group now brings to you their newest venture along with Banka Infracon in Taloja.



“

---

## Destination Taloja

---

”

Wave of residential projects about to swoop Taloja!

Pegged as the next residential hub, it offers a variety of options when compared to overflowing Mumbai.

A part of the rapidly developing Navi Mumbai, Taloja enjoys proximity to major landmarks of Navi Mumbai.





“

---

Ride the new wave!

---

”

#### CONNECTED

Taloja is part of CIDCO's Metro Rail project offering connectivity to nearby Kharghar, Belapur, Pendhar.

#### AIRPORT

Taloja will be connected to the proposed Navi Mumbai International Airport (NVIA) through Metro Rail.

#### SHOPPING

Be it grocery shopping or picking up the newest trends, it is just a short drive away.

D-Mart, Kalamboli; Glomax Mall, Kharghar; Centre One, Vashi among others.

#### SPIRITUAL

ISKCON temple located in Kharghar is closer than you think.

#### RELAX

Unwind and relax at the nearby located Golf course and Central Park, Kharghar.

“

Walk in to Grandeur

”







”

---

Feel at home the minute  
you step into AZURE.

---

“

The 'Designer Entrance lobby' has been created such  
that it ushers you in with a warm smile that says

'Welcome home'.

#### PROJECT HIGHLIGHTS

- Ground + 21 storey tower -
- 2BHK luxurious apartments -
- Two high-speed elevators -
- French windows and branded Sanitary ware -
- Gymnasium -
- Children's play area -





“

---

## Interior Features

---

”

### KITCHEN

- Granite kitchen platform with glazed lustre tiles in dado above platform -
- Stainless steel sink -

### FLOORING

- Vitrified flooring in living room, bedroom and kitchen -
- Designer ceramic finished flooring on all terraces -

### WALLS & PAINTS

- Internal walls with POP finishing -
- Lustre or acrylic paints of premium quality on interior walls -
- External walls painted with good quality textured paints -

### ELECTRIFICATION

- Concealed copper wiring with adequate points for AC, refrigerator, geyser, washing machine, TV, cable, telephone etc. -
- Concealed copper wiring with branding modular switches -

### DOORS & WINDOWS

- Laminated main door and internal doors with decorative fittings -
- Anodised aluminium sliding windows with granite photo framing -
- All windows with railings -

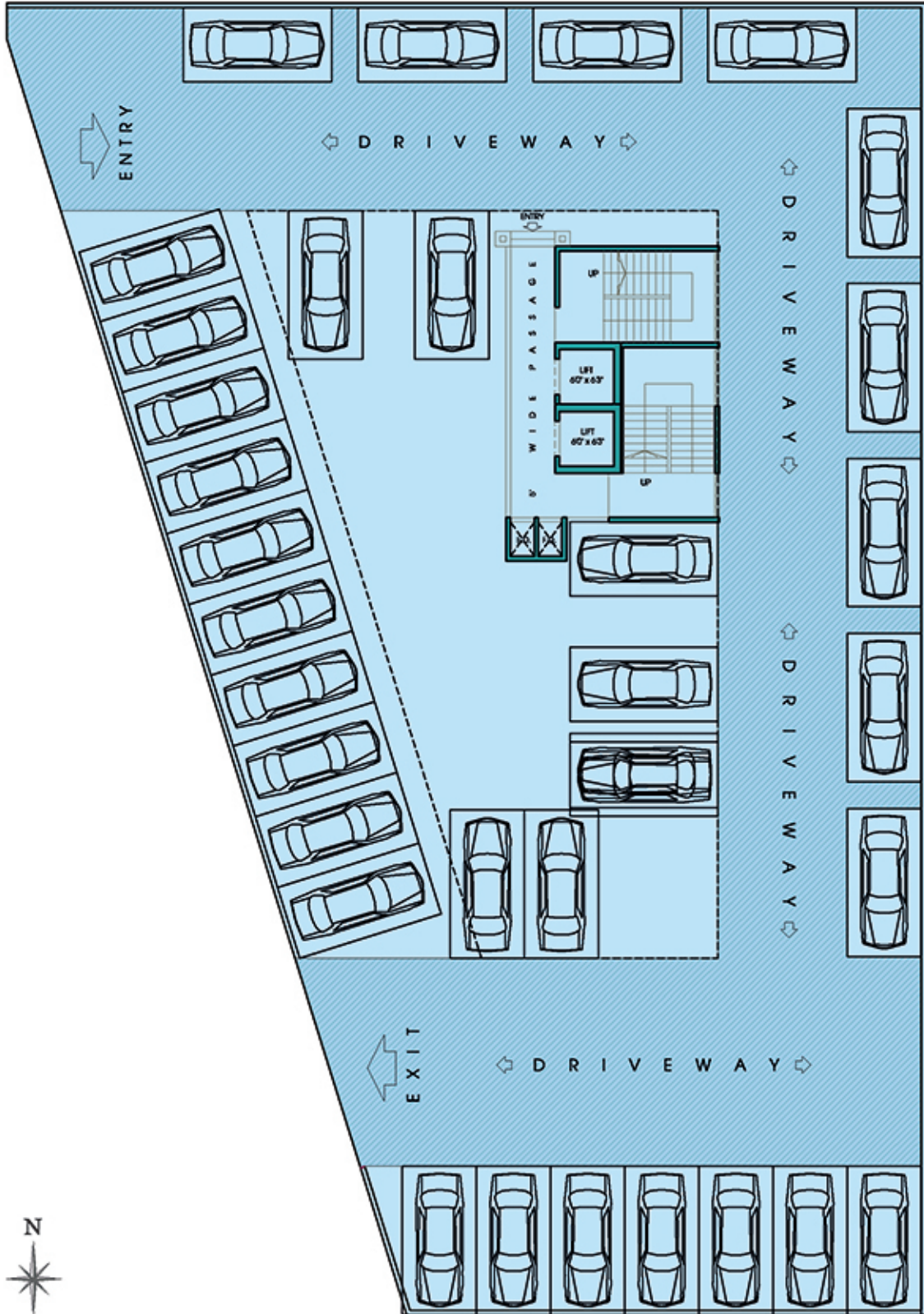
### TOILETS

- Ceramic floorings & full height glazed tiles on walls -
- Top quality luxury sanitary ware fittings -
- Geyser in all attached bathrooms -
- Concealed plumbing with provision for exhaust fan -

### PLUMBING

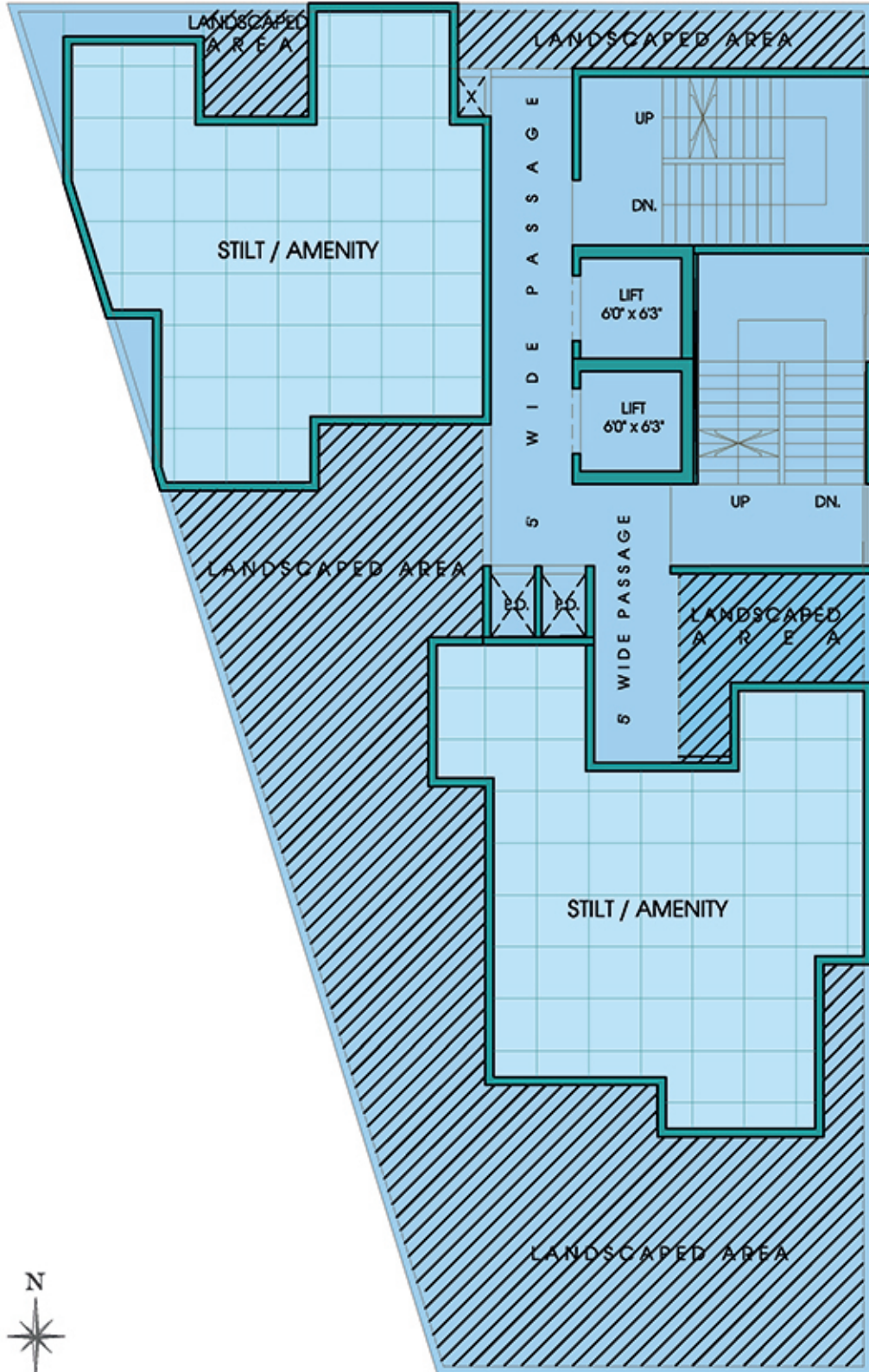
- Concealed plumbing system in kitchen and all toilets -
- Good quality C.P. fittings of reputed make -

— — — — —  
G R O U N D F L O O R P L A N





FIRST FLOOR PLAN



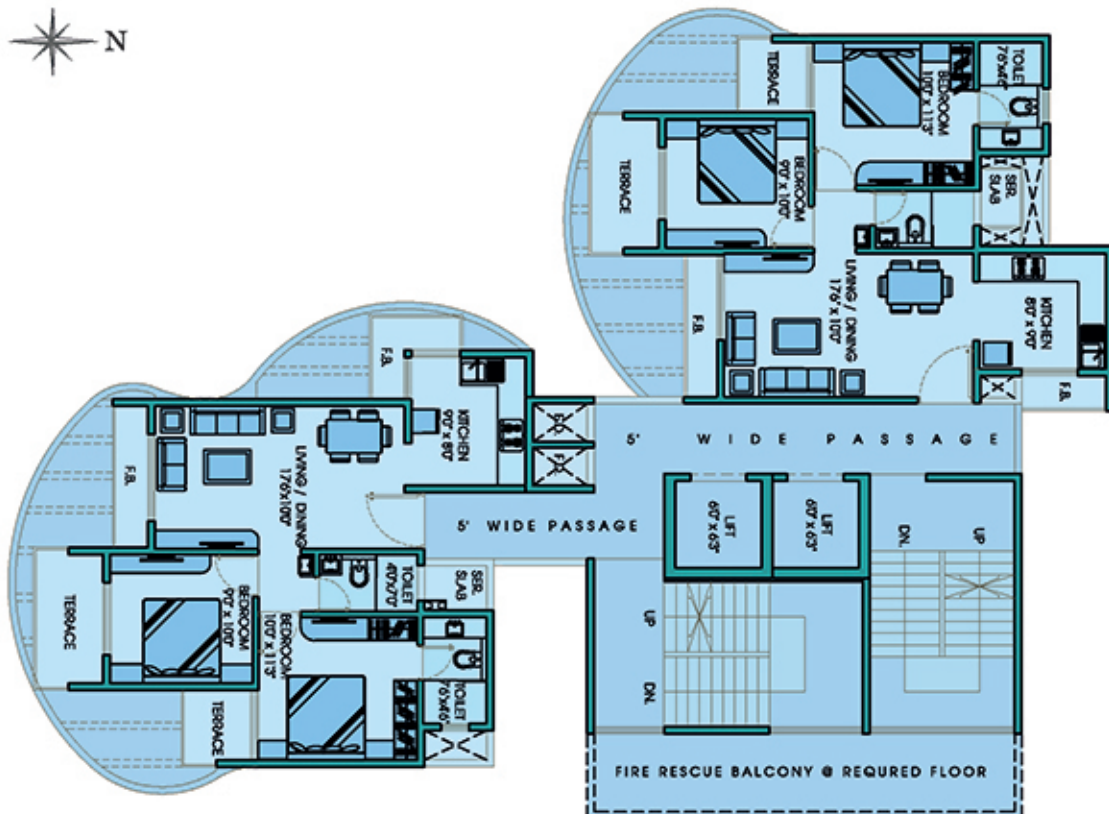
2 BHK TYPE A LAYOUT  
FOR EVEN FLOOR

(2<sup>nd</sup>, 4<sup>th</sup>, 6<sup>th</sup>, 8<sup>th</sup>, 10<sup>th</sup>, 12<sup>th</sup>, 14<sup>th</sup>, 16<sup>th</sup>, 18<sup>th</sup>, 20<sup>th</sup>)



EVEN FLOOR PLAN

(2<sup>nd</sup>, 4<sup>th</sup>, 6<sup>th</sup>, 8<sup>th</sup>, 10<sup>th</sup>, 12<sup>th</sup>, 14<sup>th</sup>, 16<sup>th</sup>, 18<sup>th</sup>, 20<sup>th</sup>)

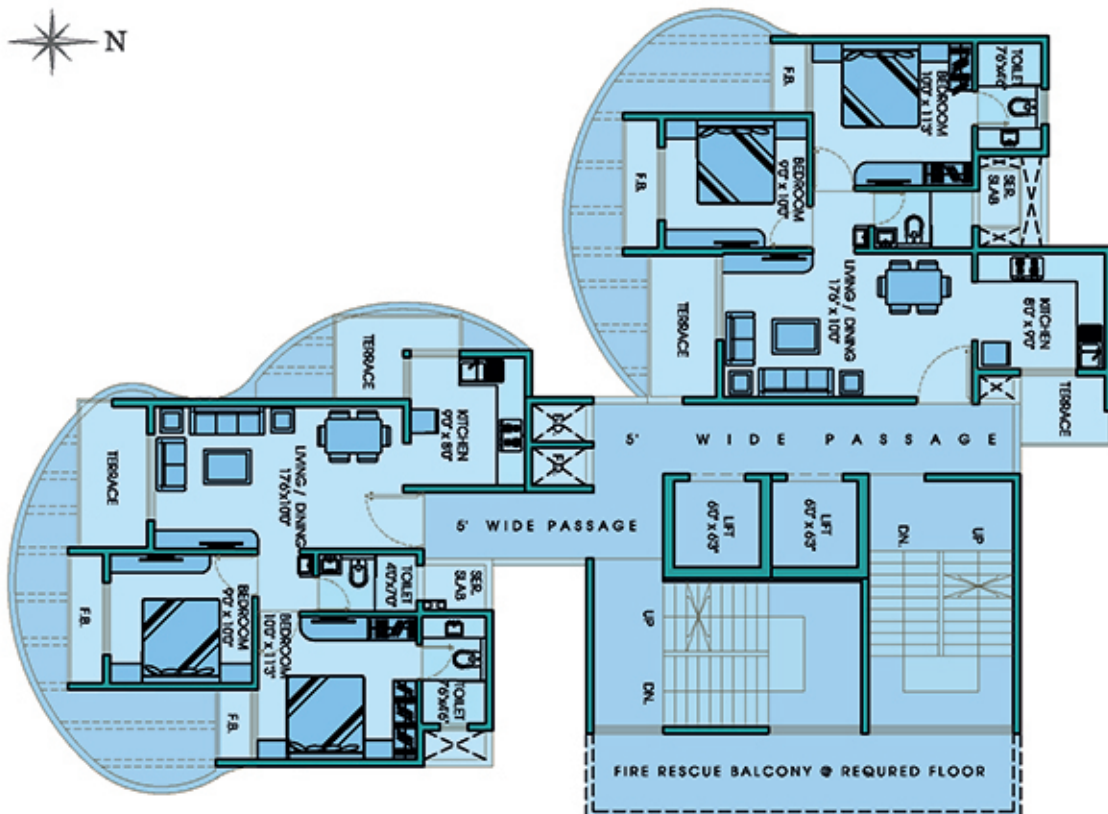




  
**2 BHK TYPE B LAYOUT**  
**FOR ODD FLOOR**  
 (3<sup>rd</sup>, 5<sup>th</sup>, 7<sup>th</sup>, 9<sup>th</sup>, 11<sup>th</sup>, 13<sup>th</sup>, 15<sup>th</sup>, 17<sup>th</sup>, 19<sup>th</sup>, 21<sup>st</sup>)



  
**ODD FLOOR PLAN**  
 (3<sup>rd</sup>, 5<sup>th</sup>, 7<sup>th</sup>, 9<sup>th</sup>, 11<sup>th</sup>, 13<sup>th</sup>, 15<sup>th</sup>, 17<sup>th</sup>, 19<sup>th</sup>, 21<sup>st</sup>)



“  
**LOCATION MAP**  
 ”

